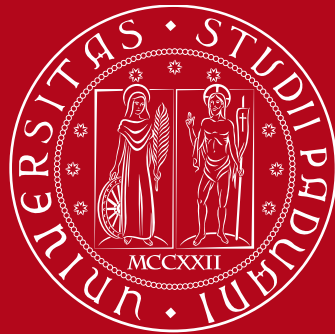


1222 • 2022
800
ANNI



UNIVERSITÀ
DEGLI STUDI
DI PADOVA

Towards Erasmus

Orientation Sessions about the Erasmus for Studies call 2022/2023



International Relations Division -Projects and Mobility Office
Mobility Unit School of Psychology

This meeting agenda:

- What **Erasmus for Studies** and **SEMP** programme are
- Why choosing international mobility as an international student
- How to choose the **right destination**

What **we won't talk about**:

- Erasmus for Traineeship programme
- Ulisse Call: mobility outside Europe
- Details about the Call, selection and application procedures> another meeting is set on 6/12/2021 at 12.30 PM



MOBILITY PROGRAMMES

INTERNATIONAL
RELATIONS DIVISION



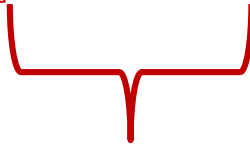
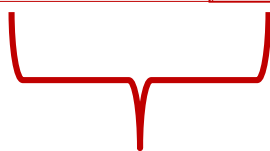
PROJECTS AND MOBILITY
OFFICE



ERASMUS+
STUDIES

SEMP

ULISSE



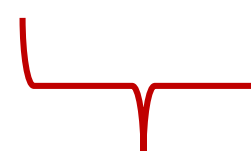
RESEARCH AND BUSINESS
RELATIONSHIP DIVISION



CAREER SERVICE



ERASMUS+ TRAINEESHIP



- Mobility Unit (C)
- Erasmus Desk di Scuola

- Mobility Unit (uff.centrale)

- Stage and Traineeship (pal.Storione)
- *Ufficio Tirocini* of the School



ERASMUS+ MOBILITY FOR STUDIES is a programme in the field of education, **promoted and funded by the European Commission**. It gives to students enrolled in European universities joining the programme, the possibility **to study in a different European country**. Students can spend up to 12 months of Erasmus+ Mobility for every study cycle.

SEMP is a similar programme for **mobilities to Switzerland** and it is funded by the Swiss government. Students can sum up this mobility to the Erasmus+ one during their studies.

With both programmes you will be able to:

- Spend one or two semesters abroad **next academic year**
- Take **courses** and sit **exams**
- Only in a **very few cases**: work on a thesis/Internship, under the condition to take courses and sit exams



The **Erasmus and SEMP** scholarships are **contribution offered to support your costs for subsistence** related to the mobility period. They are **not full fundings** of your expenses!

Erasmus+for studies: Grants are defined depending on the geographic area of the chosen destination country (250/350 Euro/month).

SEMP: Grants are about 360 Swiss francs per month.

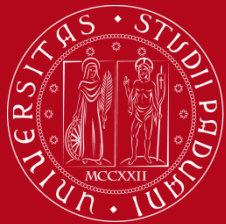
All students that will be awarded with an Erasmus/SEMP place, must pay their **fees** to the University of Padua during their mobility and they are **exempt from paying the fees of the partner university** (apart from some contributions for services that are sometimes required, particularly in Germany).

Students **will continue to benefit from any study scholarships** (e.g. Region Veneto scholarship), as long as they are not funded with European funds.

At the end of the mobility period, the **full recognition** of all activities is **guaranteed**.

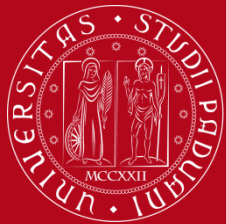
This means that the exams passed abroad will be part of your Unipd study plan and you do not have to repeat here the matching exams taken abroad.

Recognition occurs on the condition that awarded students achieve successful results for the exams previously approved on the Erasmus study plan (=Learning Agreement).



IMPORTANT DETAILS

- If you submit your application in a certain academic year you'll leave on the following academic year. If you apply now **you won't leave** for the second semester 21/22
- Once you're awarded with a scholarship, you decide when to leave, according to the number of finantiable months stated for every agreement (one semester or full academic year)
- You can apply even if you have already had an Erasmus Mobility in a preuiuos academic career (LLP/ERASMUS , Erasmus+ Studies **or** Traineeship, ERASMUS MUNDUS Action1)

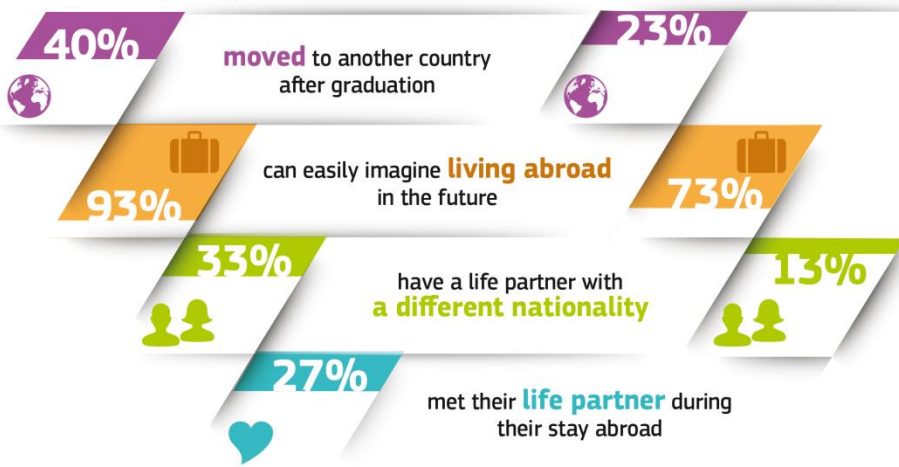


WHY CHOOSING THE INTERNATIONAL MOBILITY?

INTERNATIONAL LIFE

Former Erasmus students

Non-mobile students



EU's Erasmus study abroad programme is 'responsible for 1m babies'

A new study suggests over a quarter of those who take part in the Erasmus scheme meet their long-term partner while studying abroad

Chris Green | @cghgreen | Tuesday 23 September 2014 | 0 comments



You will be able to:

- undertake a learning experience in **another European country**
- enrich your CV
- deepen your international and cultural experience... and much more ☺

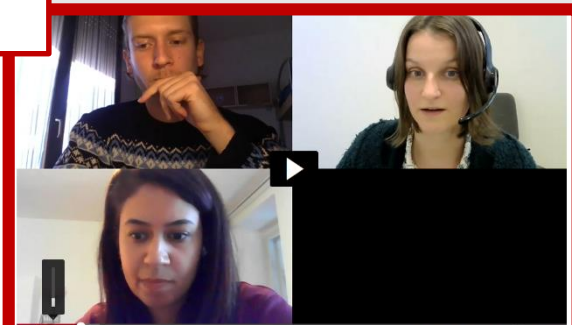
MOBILITY TALKS

EXCHANGE YOURSELF
14 e 15 ottobre 2021

Session held in English.
Listen to Yafa, talking about her Erasmus experience as international student



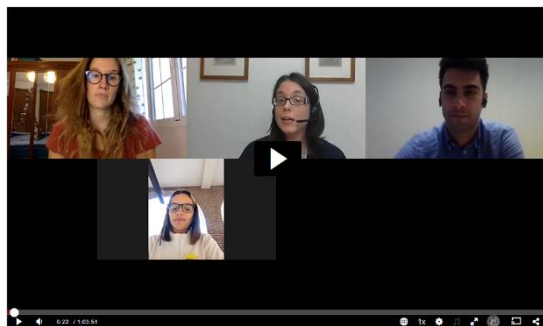
Mobility Talks - Perché una sola mobilità, quando posso farne due? ▶ 2 ● ●



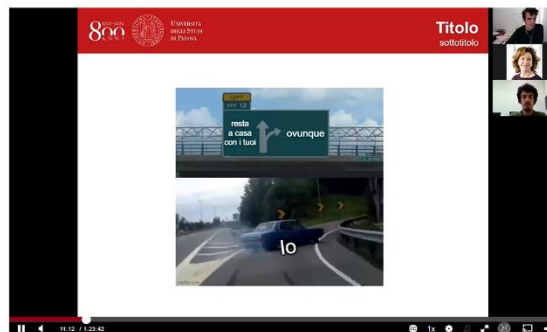
My Mobility (English session) ▶ ● ●



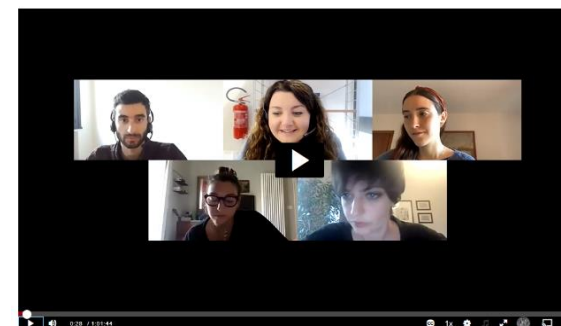
L'Erasmus inaspettato: lasciarsi sorprendere ▶ 3 ● ●



Mobility Talks - L'Erasmus è la mia forza. Coltivare la resilienza. ▶ 1 ● ●



MOBILITY TALKS: exChange yourself - 14/10/2021 ▶ 3 ● ●



Non solo Erasmus: programma Ulisse, programma Arqus winter and spring schools, NICE ▶ 6 ● ●

WHEN TO LEAVE

**The School of Psychology encourages application of
1° year Bachelor students!**

- It's easier to find matching courses abroad
- You can immediately start with mobilities for studies and have the chance to reply it during the upcoming academic years
- It's easier to spend abroad one entire academic year

...but we always have a lot of 2° year students' applications!

WHEN TO LEAVE

Applicants on:

- Their third Ba year may leave only in the **second semester of their 1° year of Master**, assuming that they will access one of the Ma held at the School of Psychology
- Their first Ma year usually choose to leave during the **first semester of their 2° year of Master** in order to work on their thesis/Internship during the second semester (in Padova or abroad)

HOW TO CHOOSE THE RIGHT DESTINATIONS

Don't fall into stereotypes!

For many international students, mobility in Europe is significant only if spent in UK. There are lot of Countries where you can study: to have more chances, address your choices differently...

If you want to still study in English, several partners offer this opportunity: you won't study in English only in UK, Ireland or Malta.

Furthermore, we have a few agreements with UK and only one is available For Master students (CN2 only).

WHERE TO GO

ICELAND
Ma
students
only



FINLAND
Ma
students
only



IRELAND
Ba
students
only



MALTA
Ba
students
only



GREECE
Ba
students
only



CYPRUS
Ba
students
only



Anomalies in 2021/2022 merit ranking lists

n_acc ordo	CODICE ERASMUS Erasmus Code	NOME UNIVERSITA' - CODICE ISCED - AREA DI STUDIO - CICLO (*) Name of the University - ISCED Code - Field of study - Cycle (*)	DOCENTE RESPONSABILE Academic Coordinator	N. POSTI N. of places	NUMERO MESI PER BORSA n of months per place	VINCITORI Successful Students	IDONEI Eligible Students
1938	NL-UTRECHT01	Universiteit Utrecht - - 0310 - Social and behavioural sciences - VIENO Alessio - ciclo 1, 2	VIENO Alessio	2	6	1. <input type="text"/> 2. <input type="text"/>	1. <input type="text"/> 2. <input type="text"/> 3. <input type="text"/> 4. <input type="text"/> 5. <input type="text"/> 6. <input type="text"/> 7. <input type="text"/> 8. <input type="text"/> 9. <input type="text"/> 10. <input type="text"/> 11. <input type="text"/> 12. <input type="text"/> 13. <input type="text"/> 14. <input type="text"/> 15. <input type="text"/> 16. <input type="text"/> 17. <input type="text"/>
481	HU-PECS01	Pécsi Tudományegyetem - Faculty of Humanities - 0313 - Psychology - PERESSOTTI Francesca - ciclo 1	PERESSOTTI Francesca	2	5	1. <input type="text"/> 2. <input type="text"/>	
1690	IRL-GALWAY01	National University of Ireland - - 0313 - Psychology - REGOLIN Lucia - ciclo 1	REGOLIN Lucia	2	10	1. <input type="text"/> 2. <input type="text"/>	1. <input type="text"/> 2. <input type="text"/>

Some important details about Erasmus+for studies destinations

UK destinations

Please note that as of January 1, 2021, a passport, entry visa, health care and other additional procedures will be required to stay in the UK. Costs and administration of these practices are entirely responsibility of the student.

ARQUS



Unipd is part of the [Arqus](#) consortia, a network of 7 european universities. Arqus mobility agreements are included in the Erasmus+ for Studies list:

- BERGEN: 2 spots (Master students only)
- GRAZ: 5 spots (Bachelor+Master students)
- GRANADA: 1 spot (Master students only)

Spanish destinations

Study cycle in Spain is divided within 4 years (Curso de Grado) + 1 year (Curso de Posgrado).

All the Erasmus+for Studies agreements are established with Cursos de Grado (except for Granada/Arqus).

This means that exchange students on their Masters' years must pick up courses from the 4° year of grado, from the «asignaturas optativas» (Spanish optional credits) and if allowed by the partner universities also from the 3° year.

HOW TO CHOOSE THE RIGHT DESTINATION

Students of the School of Psychology can choose **three destinations** for both the Erasmus and SEMP calls (but they will win for one only!) and listing them in order of preference.

Make a «smart» choice. This means: choosing among the agreements which are suitable for your degree course.

The first reason for your choice must be the similarity with your study plan or «manifesto degli studi»

psicologia.unipd.it/manifesti-degli-studi

You can then have secondary motivations, such as:
International ranking of a certain university, interest for that University or country or city, family reasons.--

Every motivation is equally valid but the most important thing is to find similar courses units abroad.

The complete lists with 2022/2023 agreements are available here

<https://www.unipd.it/en/erasmus-studies-out>

<https://www.unipd.it/en/sempr>

STEP 1

Sort by:

- 1) Degree course
- 2) Geographic area/Countries of interest

STEP 2

Check the «Note» column

STEP 3

Check on partner universities' websites:

- 1) Course catalogues
- 2) Language requirements
- 3) Relevant info for Incoming students

Usually these details are available on Incoming/exchange/Erasmus students webpages

1) **Carefully read** the official Unipd webpages about Erasmus+ for Studies and SEMP calls

<https://www.unipd.it/en/erasmus-studies-out>

<https://www.unipd.it/en/erasmus-psychology>

<https://www.unipd.it/en/sempr>

2) **Join** the nfo meeting on how to apply on **06/12/2021** at **12.30**

3) If you have any request, **join** the Q&A sessions

4) **Book** an individual or group appointment (max. 6 persons, same year/same degree course) with the Erasmus Desk of the School

Mobility Unit at the School of Psychology

Sara Pellegrini

via Venezia, 12 – first floor

Tel. +39 049 827 6163

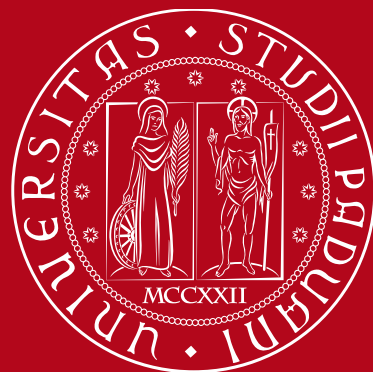
E-mail: erasmus.psicologia@unipd.it

Students' hours: **by appointment only** to be agreed
via e-mail/phone

Monday and Wednesday: 10 AM to 1 PM

Tuesday and Thursday: 10 AM to 1 PM and 3 PM to 4.30 PM

1222 • 2022
800
ANNI



UNIVERSITÀ
DEGLI STUDI
DI PADOVA